

Types of containers, Uses and Measurements

DRY - GENERAL - DV



Frequent use: Dry loads: bags, boxes, shrink film packs, machines, furniture, etc.

All information is standardized. A 20 ft. container can store upto 23,000 kg of load, depending on its volume.

It is advisable, especially in food-grade cargo, not to exceed the net weight of 22,000 kg.

Payload, code and identification number of each container are found on its doors.

| Size | Weight kg. | | | Inner Dimensions mm | | |
|--------|-----------------|--------|----------|---------------------|-------|--------|
| | Gross weight | Tare | Payload | Lenght | Width | Height |
| 20 ft. | 24,000 | 2,200 | 21,800 | 5,902 | 2,350 | 2,392 |
| 40 ft. | 30,480 | 3,800 | 26,680 | 12,032 | 2,350 | 2,390 |
| Size | Door opening mm | | Vol. | | | |
| | Width | Height | Capacity | | | |
| 20 ft. | 2,341 | 2,280 | 33.2 | | | |
| 40 ft. | 2,338 | 2,280 | 67.6 | | | |

High Cube - HC



Frequent Use: Dry loads: higher than regular 40 feet container (see chart below), this allows more volume capacity but payload is the same.

| Size | Weight Kg. | | | Inner Dimensions mm | | |
|--------|-----------------|--------|----------|---------------------|-------|--------|
| | Gross weight | Tare | Payload | Lenght | Width | Height |
| 40 ft. | 30,480 | 3,900 | 26,580 | 12,033 | 2,350 | 2,695 |
| Size | Door opening mm | | Vol. | | | |
| | Width | Height | Capacity | | | |
| 40 ft. | 2,338 | 2,585 | 76.2 | | | |

Open Top - OP



Frequent use: This container is proper for large cargoes that do not fit the standard container door opening. Such as machines, marbles, glasses, timber, etc.

| Size | Weight Kg. | | | Inner Dimensions mm | | |
|--------|--------------|-------|---------|---------------------|-------|--------|
| | Gross Weight | Tare | Payload | Lenght | Width | Height |
| 20 ft. | 24,000 | 2,140 | 21,860 | 5,894 | 2,344 | 2,347 |

| 40 ft. | 30,480 | 3,700 | 26,780 | 12,027 | 2,344 | 2,347 |
|--------|-----------------|--------|----------|--------|-------|-------|
| Size | Door opening mm | | Vol. | | | |
| - | Width | Height | Capacity | | | |
| 20 ft. | 2.336 | 2,275 | 31.5 | | | |
| 40 ft. | 2.336 | 2,275 | 67.0 | | | |

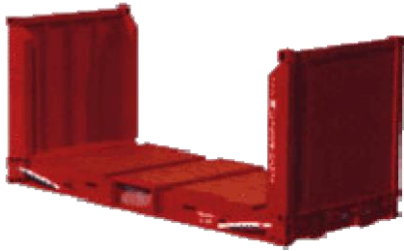
Bulk - BLK



Frequent use: This container is designed for cargo in bulk. It gets loaded from the top. Suitable for chemical products, fertilizers, some flours, sugar, salt, plastic materials in lumps, etc.

| Size | Weight Kg. | | | Inner dimensions mm | | |
|--------|-----------------|--------|----------|---------------------|-------|--------|
| | Gross Weight | Tare | Payload | Lenght | Width | Height |
| 20 ft. | 24,000 | 2,800 | 21,200 | 5,888 | 2,332 | 2,338 |
| Size | Door opening mm | | Vol. | | | |
| - | Width | Height | Capacity | | | |
| 20 ft. | 2.340 | 2,263 | 32.4 | | | |

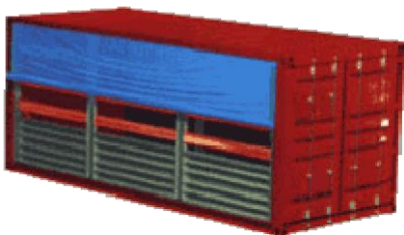
Flat – Foldable Platforms - FLT



Frequent Use: Hard to handle loads, metal coils, cables, heavy vehicles, timber, special machinery, etc.

| Size | Weight Kg. | | | Inner Dimensions mm | | |
|--------|--------------|-------|---------|---------------------|-------|--------|
| | Gross Weight | Tare | Payload | Lenght | Width | Height |
| 20 ft. | 25,400 | 3,080 | 22,320 | 5,988 | 2,398 | 2,231 |
| 40 ft. | 45,000 | 5,300 | 39,700 | 12,064 | 2,369 | 1,943 |

Open Side - OS

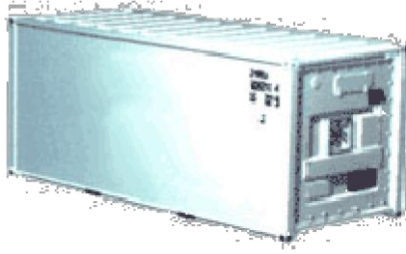


Frequent Use: similar to Open Top, but in this case it opens on the side. Suitable for big volume cargo that does not fit standard container doors. Perfect to load and unload in railway stations.

| Size | Weight Kg. | | | Inner Dimensions mm | | |
|--------|-----------------|--------|----------|---------------------|-------|--------|
| | Gross Weight | Tare | Payload | Lenght | Width | Height |
| 20 ft. | 25,400 | 2,930 | 22,470 | 5,896 | 2,310 | 2,255 |
| Size | Door opening mm | | Vol. | | | |
| - | Width | Height | Capacity | | | |

| | | | |
|--------|-------|-------|------|
| 20 ft. | 2,236 | 1,960 | 31.0 |
|--------|-------|-------|------|

Reefer - RF



Frequent Use: To transport perishable products, such as vegetables, fruits, meat, etc.

| Size | Weight Kg. | | | Inner dimensions mm | | |
|--------|--------------|-------|---------|---------------------|-------|--------|
| | Gross Weight | Tare | Payload | Lenght | Width | Height |
| 20 ft. | 25,400 | 2,870 | 22,530 | 5,460 | 2,240 | 2,225 |
| 40 ft. | 32,500 | 4,535 | 27,965 | 11,550 | 2,250 | 2,215 |

| Size | Door opening mm | | Vol. |
|--------|-----------------|--------|----------|
| | Width | Height | Capacity |
| 20 ft. | 2,240 | 2,180 | 31 |
| 40 ft. | 2,250 | 2,160 | 65 |

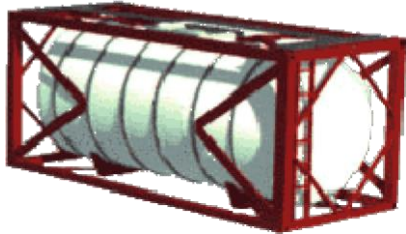
Reefer High Cube - RH



Frequent Use: similar to regular Reefer, but has greater volume capacity, although same weight.

| Size | Weight Kg. | | | Inner Dimensions mm | | |
|--------|-----------------|--------|----------|---------------------|-------|--------|
| | Gross Weight | Tare | Payload | Lenght | Width | Height |
| 40 ft. | 32,500 | 4,630 | 27,870 | 11,583 | 2,286 | 2,554 |
| Size | Door opening mm | | Vol. | | | |
| | Width | Height | Capacity | | | |
| 40 ft. | 2,294 | 2,571 | 67.6 | | | |

Iso Tank - ISO



Frequent Use: Designed to transport liquids, hazardous substances such as toxic chemicals or corrosive, highly flammable substances, oils, milk beer, wine, water, etc.

| Size | Weight Kg. | | | Inner Dimensions mm | | |
|--------|-----------------|--------|------------|---------------------|-------|--------|
| | Gross Weight | Tare | Payload | Lenght | Width | Height |
| 20 ft. | 30,480 | 3,070 | 27,410 | - | - | - |
| Size | Door opening mm | | Vol. | | | |
| | Width | Height | Capacity | | | |
| 20 ft. | - | - | 21,000 lt. | | | |